



NEMA 4X Continuous Hinge Quick Release Padlockable Extended Cover 18X16X10 Fiberglass-Opaque

By Wiegmann
Catalog # [HW-RHJ181610CHQR](#)

NEMA 4X Continuous Hinge Quick Release Padlockable
Extended Cover 18X16X10 Fiberglass-Opaque

Features

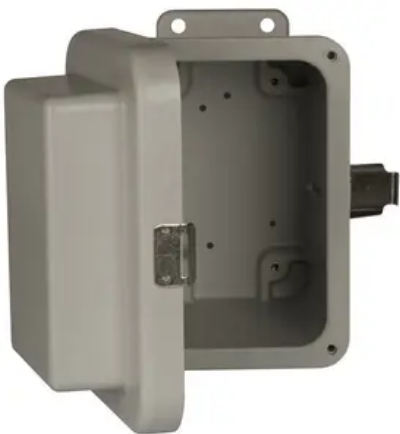
- Constructed of molded fiberglass
- Raised cover with continuous hinge and quick-release padlockable latches
- Poured seamless gasket provides a water-tight and dust-tight seal
- Mounting provisions are provided

General

Catalog Number	HW-RHJ181610CHQR
Color	Gray
Cover Type	Hinged Cover
Material	Fiberglass
Mounting Type	Wall Mount
Series	JIC
Type	Enclosure
UPC	786725878079

Dimensions

Cubic Capacity	2880 cu.in
----------------	------------



*Representative Image

Depth	10 in
Height	18 in
Weight	19.5 lb
Width	16 in

Certifications And Compliance

Buy American Compliant	Contact Manufacturer
Certified Listed	cULus
Nema Rating	4X
UL Listed	Yes

Logistics

Carton Quantity	1
-----------------	---

Product Assets

- [3D Models - HW-RHJ181610CHQR](#)
- [Catalogs - Wiegmann Non-Metallic Enclosures](#)
- [Engineering Drawing - HWDHW-RHJ181610CHQR-S](#)
- [SDS - HCC SDS](#)
- [Specifications - HW-RHJ181610CHQR](#)
- [Terms and Conditions - HCC Terms & Conditions](#)



A Hubbell brand